

REINOCITE

**AutoCITE**



**X3**

**reino  
AutoCITE X3**

*built to last,  
designed to evolve*



## Reliable, field-proven and robust

The reliable, field-proven and robust AutoCITE X3 can withstand the rigours of all weather conditions and physically demanding environments.

Unlike a standard PDA, the AutoCITE X3 can operate in harsh environmental conditions without the need to rely on additional, and often cumbersome, protection devices.

The X3 solution is unique within the industry as it is the only solution that was specifically designed for operational electronic infringement issuance. The devices and software systems have been deployed successfully for many years in both the United States and Australia.

## All of the features of a standard PDA device and much more



No ongoing individual licence fees

## Ergonomic design

The X3 is very light, weighing only 920 grams. The tickets, thermal printer, camera, voice recorder and GPRS are contained within the single unit, making it easy to carry. The AutoCITE X3 has no straight edges, having adopted an ergonomic architectural chassis design. Independent studies have proven that manual handling risks associated with activities relating to the use of the X3 are minimal.

## Cost-effective, turnkey solutions

Reino is an integrated equipment designer, manufacturer and service provider, with unrivalled knowledge and local experience. The AutoCITE X3 offers a competitive 'whole of life' solution while concurrently delivering optimum efficiencies and maximum uptime.

## Comprehensive warranty and maintenance bundle

The comprehensive X3 Warranty & Maintenance program covers ALL aspects of the hardware and software solution. With no reliance of any third party vendor, every aspect of the solution can be supported and repaired by our local support team. In the event that a device requires servicing or repair, Reino will issue a replacement device to ensure optimum uptime of the solution.

## Backlit screen and keyboard facilitates visibility in all light conditions

The AutoCITE X3 keypad has three adjustable settings for the backlit screen and keyboard operation. Various colour schemes (including wallpapers) and brightness levels are easily adjusted.



The X3 can withstand moisture ingress and multiple drops. It is engineered to withstand the rigors of ongoing operational regulatory use.



The tickets are effortlessly loaded in the field and come in an easy to carry flat pack.

Both the illuminated screen and keypad make the AutoCITE X3 highly visible in partial or complete darkness, as well as in strong bright, sunny conditions.

## It is easy to cancel and/or re-issue tickets

Infringements that are downloaded from AutoCITE to AutoISSUE can be viewed, voided and reprinted. Re-issuing voids the current ticket and takes you to the 'Ticket Issuance' screen. The fields are populated with the existing data. The Officer can tab through and make necessary corrections and add additional notes.

## Operated by the stylus or keypad

Operated and navigation by either the stylus and/or the user-friendly keyboard, the X3 is both OH&S compliant and highly reliable 'out in the field'. If the Officer loses a stylus their capacity to continue operating is not diminished. The touch-screen is useful for Windows Mobile CE navigation and also for drawing diagrams that can be linked directly to infringements.

## New lithium ion battery

With the new lithium ion battery, the AutoCITE X3 can operate continuously for more than one hundred hours without backlit illumination. It is capable of seventy-two hours continuous use with printing and twenty-four hours continuous use with regular printing and full illumination.

## Optional GPRS technology

The optional GPRS functionality enables access to on-line applications, via wireless technology. GPRS enables Officers to access online applications such as databases and registers.

## World leading AutoISSUE software

The AutoCITE X3 solution relies upon the world leading AutoISSUE software application, which incorporates superior security and audit capabilities. AutoISSUE is responsible for all the information that is uploaded to the handheld devices, including any record lists, registers, hot sheets, infringement notice numbers and security profiles, etc. AutoISSUE standard reports are based around common areas of interest, including officers, areas, offences and productivity. AutoISSUE software can be tailored to your workflow imperatives and mandatory requirements.

## Attaching contemporaneous data to aid in prosecution

AutoISSUE has the ability to attach photographs, voice recordings, diagrams and additional notes directly to the infringement notice at the time of issue. All images captured by the X3 are date and time embossed to aid in validating prosecution. Multiple images can be attached to any infringement and once uploaded to AutoISSUE cannot be digitally altered.

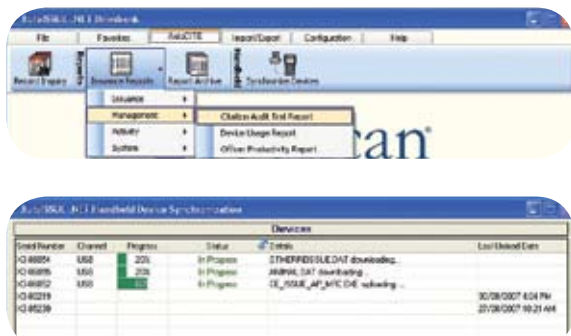
## The following photos were taken with the AutoCITE X3



Multiple sound recordings can be attached to an infringement notice. The recording is captured and stored as a 'WAV' file. An additional note can be added after the infringement has been issued if the Officer recalls any additional information that relates to the infringement.

## Six-port USB charger and docking station facilitates data transfer

A six-port docking station is used to recharge the X3 device and upload and download relevant information to AutoISSUE.



The AutoISSUE scheduling feature enables you to automate the upload process in network 'down-time'.



## Industry leading infringement modules

### 'Officer Activity Log' software module

The 'Officer Activity Log' software module enables Officers to record assigned jobs for a given period and to detail any actions taken during non-ticket writing periods. This enables improved visibility of Officer movements and activities and assists with the management of resources.

### 'Local Laws' software module

The AutoCITE X3 solution is the leading issuance device used to issue traffic and parking infringements as well as cautions, but has also been successfully used to manage an array of local law enforcement issues. The optional 'Local Laws' software module is used to issue infringements to individuals who break general local laws, not covered by other modules.

### 'Asset Management' software module

The 'Asset Management' software module records relevant information about assets. Issue, location, time, date, and general notes about each asset are easily recorded using the AutoCITE X3 device with this module.

### 'Caution or Warning Tracking' software module

The 'Caution or Warning Tracking' software module allows the Officers to issue automated caution or warning notices as well as infringement notices. Officers are alerted when vehicles have already received a caution notice, and can confidently issue an infringement notice instead.

### 'Defective Vehicle' software module

The 'Defective Vehicle' software enables the AutoCITE X3 units to issue defective vehicle notices and/or notices to comply.

### 'Parking & Traffic' software module

The 'Parking & Traffic' software module allows Officers to retrieve 'Warning (Offender) Profiles' and other hotlists. The hotlist feature enables a wide range of warning information to be recorded that facilitates efficient enforcement by Officers on patrol. This module can be used to rapidly identify those vehicles with allocated resident permits or disabled permits.

### 'Time Limit Mark Mode' software module

The AutoCITE X3 can be used to mark vehicles electronically – this function ensures that the correct times are recorded and, as there is no actual marking on the tyre, the motorist is not aware that they have been marked and cannot disguise or remove the mark.

AutoCITE X3 Technical Data	
<b>CPU</b>	Intel PXA225 X Scale
<b>Tickets</b>	There are 75 blank infringements per pack and the infringement dimension is 80mm x 152mm
<b>Camera</b>	Optional built in VGA Camera
<b>Operating temperature range</b>	The X3 will operate in a temperature range of -21 to +52 degrees. The device can be stored in a range of -30 to +70
<b>Display</b>	320 x 240 pixel ¼ panel QVGA TFT 64000 colour display
<b>Weight</b>	The device weighs 960 grams with the battery and infringement tickets loaded
<b>Printer</b>	Built in thermal printer – scalable fonts
<b>Dimension</b>	232mm x 83mm x 47mm
<b>Keyboard</b>	54 keys consisting of 26 alpha keys, 12 function keys and 4 cursor/edit keys. Hot-keys to initiate the 'contemporaneous' data capture such as voice recording and camera functionality. No shift key entries required. Minimal keystroke entry required to record offence type, make, model, colour streets and notes
<b>Memory (RAM/flash combination)</b>	Max 128Mb RAM – 128Mb ROM
<b>Audio</b>	Optional built-in voice recorder, microphone and speaker
<b>Hotsheet capability</b>	> 10 million
<b>Power</b>	Automatic power-down More than 1-month shelf life with full data retention Up to 16 hours continuous operation Recharging the devices takes 5 to 8 hours
<b>Battery</b>	Lithium Ion battery Low battery indicator User replaceable batteries
<b>Other Features</b>	Top of form sensor OCR (A) printing Signature and diagram capture

<b>Scanner</b>	Optional built-in Infra-Red IrDR Scanner	
<b>GPRS</b>	Optional	
<b>Communication</b>	Serial Port or USB	
<b>Case</b>	Tough plastic case, no cover required	
<b>Operating System</b>	Microsoft Windows CE	
<b>Operational Characteristics</b>	Time/date calendar clock Automatic infringement serialization Reprint infringement takes 8 to 10 seconds per copy Automatic hotsheet search Hotsheet search only mode Multiple offence types per infringement notice Optional Barcode and Mag stripe reader	
<b>Infringement Modules</b>	Parking Infringements Animal Infringements Local law infringements Time Limit Marking Fire Prevention Litter Infringement Damaged Sign Reporting Broken Meter Reporting Officer Activity Log Warnings Tracking Barcode printing Tourist Information Meter/Location Matrix Abandoned vehicles Passenger transport infringements	
<b>Capabilities</b>		
Hotsheet (licenses, plates, persons, permits)		1,000,000+
Offence descriptions, penalty amounts		10000+
Vehicle make list		10000+
Location list (blocks, streets, suburbs, etc)		10000+
Colour list		1000+
Stored notes printed and		10000+
Store notes non-printed		10000+
Vehicle model list		10000+
Stored infringement memory		10000+



Reino International Pty Ltd  
15/39 Herbert Street  
St Leonards NSW 2065  
[www.reino.com.au](http://www.reino.com.au)



**Reino International** *Your one-stop, single source, turnkey supplier for parking equipment, infringement-issuing devices, maintenance services and paid parking management tools.*